

10 Merinda Place Goonellabah

Table of Contents

- | [Property Details](#)
- | [Photo Gallery](#)
- | [Map](#)
- | [Contact For Inspection](#)

Property Details

10 Merinda Place, Goonellabah



SOLD BY THE WAL MURRAY TEAM

3  **2**  **2** 

Imagine "living the dream" in your own property, where a quality low maintenance lifestyle allows you to enjoy the finer things in life.

10 Merinda Place is a beautifully presented home, packed with appealing features where everything is done and ready for the new owners to simply relax and enjoy.

Located in a quiet cul-de-sac in Goonellabah, close to the Hilltop Tavern, shops, bus service, school and an easy drive to Ballina and Lennox Head.

Inside the home is the front formal lounge room providing extra space for the family to spread out or entertain. The homes main living area at the rear of the property features a formal dining room, open plan kitchen that overlooks the rear lounge room that flows onto the impressive outdoor entertaining area.

The generous main bedroom features built in wardrobes and ensuite. Bedrooms 2 and 3 are good size double rooms with generous built-in wardrobes.

This home is an entertainers dream and is ideal for the quiet family BBQ or to entertain friends in style. The home features a spacious entertaining area that overlooks the backyard and the inground pool. Under the home there is a spacious storage area.

The backyard has been thoughtfully laid out with low maintenance gardens and fully fenced for the family pet.

Call today to arrange your private inspection.

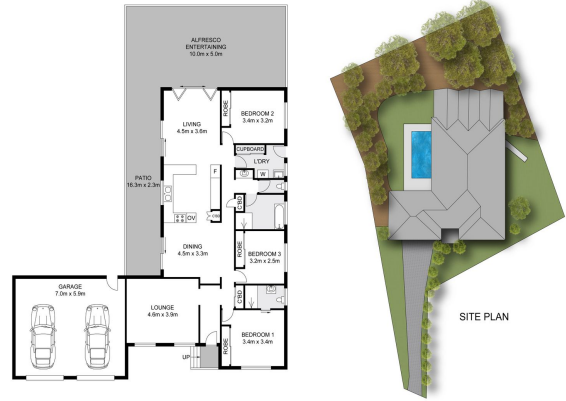
- 3 Bedrooms
- 2 Bathrooms
- 2 Garages
- 1 Ensuite
- Ducted Cooling
- In Ground Pool
- Ducted Heating
- Outdoor Entertaining
- Built In Robes

\$879,000

Photo Gallery



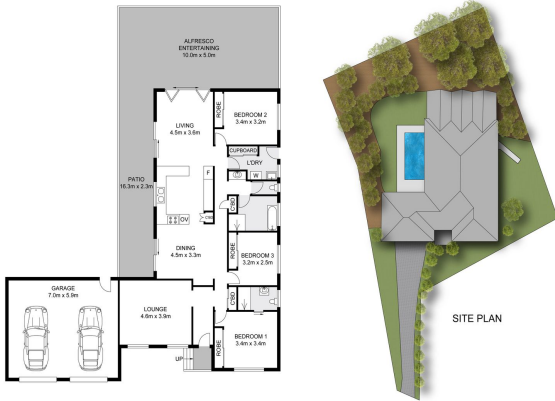




Dimensions are approximate. All information contained herein gathered from sources we believe to be reliable. However we cannot guarantee its accuracy and interested persons should rely on their own enquiries. © visionmedia vision 2024.

10 Merinda Place, Goonellabah

INT : 132.8m²
EXT : 76.6m²
GARAGE : 41.3m²



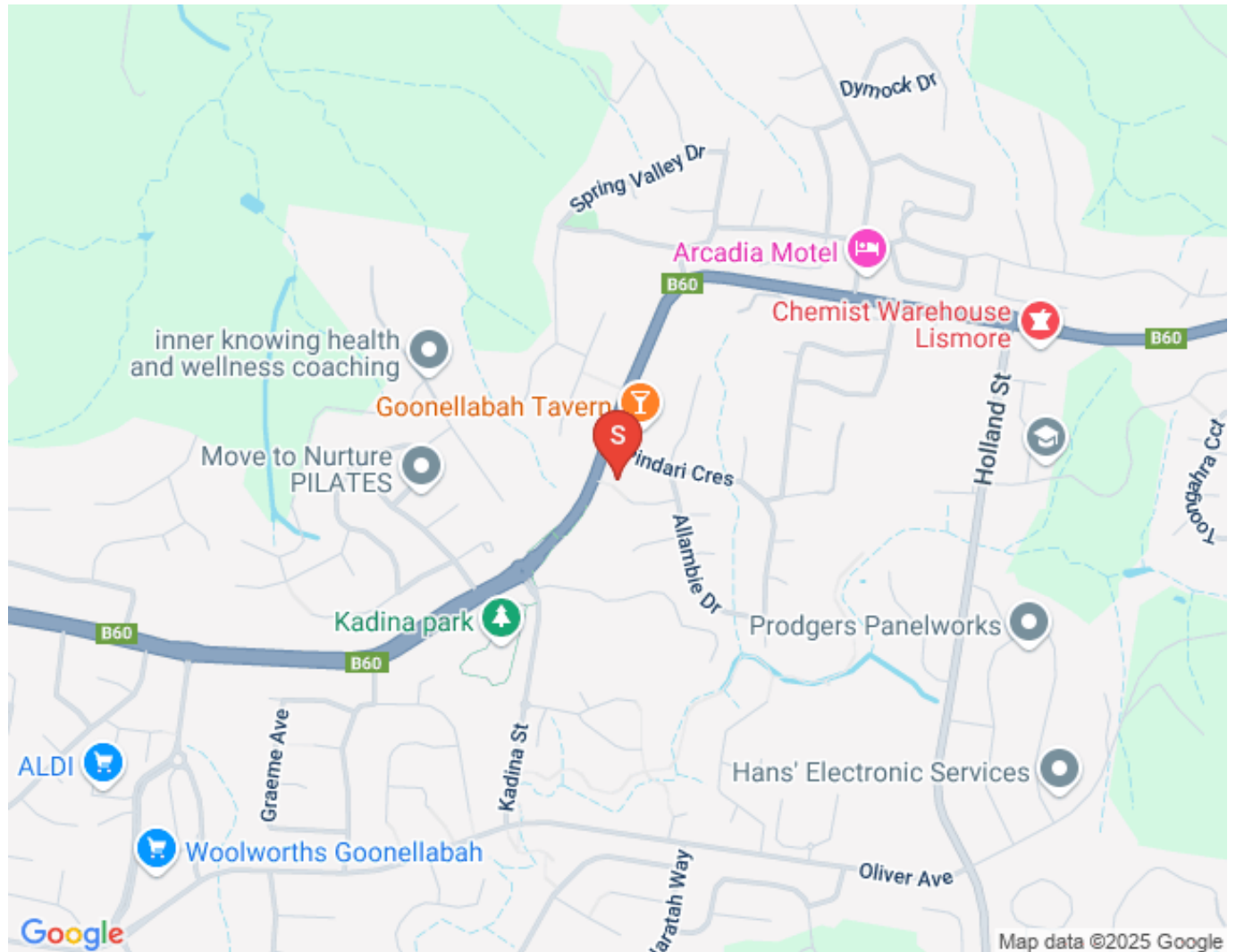
Dimensions are approximate. All information contained herein gathered from sources we believe to be reliable. However we cannot guarantee its accuracy and interested persons should rely on their own enquiries. © visionmedia vision 2024.

10 Merinda Place, Goonellabah

INT : 132.8m²
EXT : 76.6m²
GARAGE : 41.3m²



Map



Contact For Inspection